

RATTLECORE QUICK START GUIDE

74mm

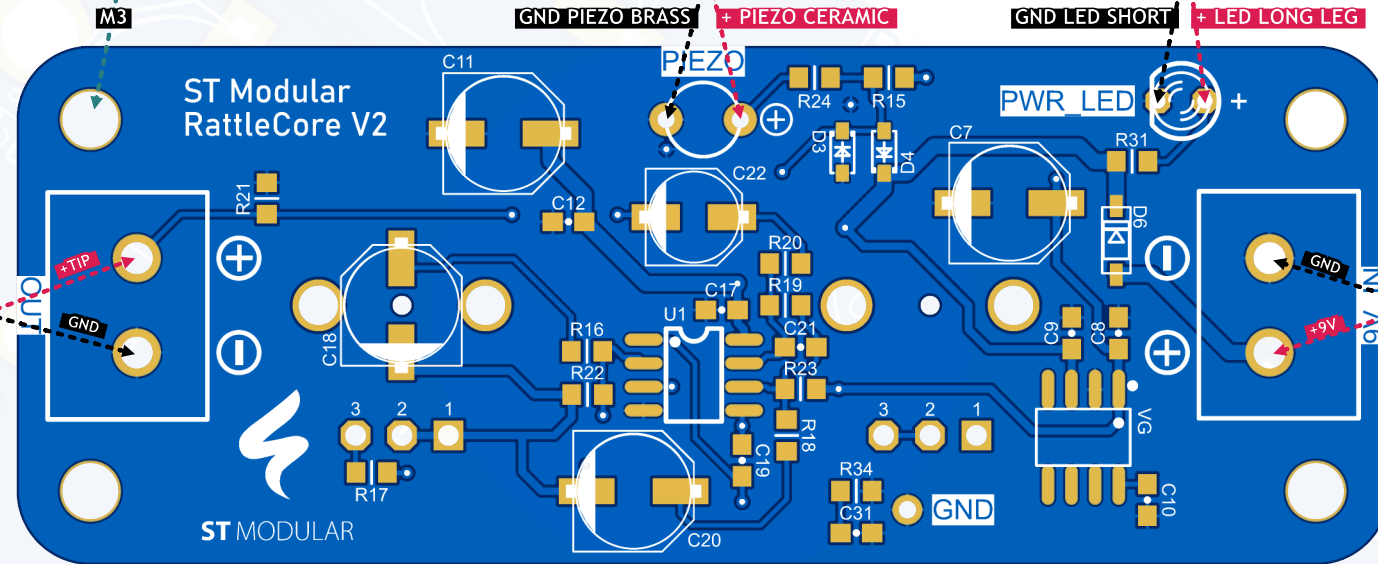
Optional mounting screw

PIEZO MIC DISC
You can also solder two piezos in parallel here

Optional LED for power indication

Bottom Side

Solder Audio Out socket here

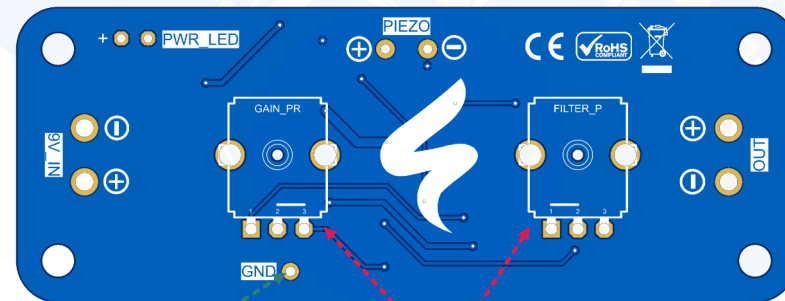


Solder 9V power connector or battery here

28mm

Top Side

All through-hole pads are accessible from both sides



Optional Enclosure Soft Ground

AC-grounded & high-resistance DC-grounded

Solder Potentiometers here

RATTLECORE

Rattlecore is a compact, high-gain piezo preamp PCB with integrated high-pass filter designed for DIY noise boxes, contact mics and experimental sound sources.

KEY-FEATURES

- Adjustable gain from +10 dB up to +50 dB
- Integrated high-pass filter (47 Hz – 4.8 kHz)
- Optimized for piezo contact microphones
- Clean virtual ground via TLE2426 rail splitter
- Onboard power LED
- Protection diodes on input
- Compact PCB for easy enclosure builds
- Designed for 9V DC operation (battery or DC)
- Soft grounding option for enclosure
- No calibration necessary

If you have any questions, please visit the ST Modular Forum at www.st-modular.de

